

Typification of *Onopordum heteracanthum* var. *carmanicum* and *O. myriacanthum* (Asteraceae, Cardueae–Carduinae)

K. Negaresh*

Abstract

Two taxon names in the genus *Onopordum* are lectotypified: *O. heteracanthum* var. *carmanicum* BORNM. and *O. myriacanthum* BOISS. Images of the type specimens are provided.

Kew Words: Taxonomy, *Onopordum*, lectotypification, syntype.

Introduction

Onopordum L. (Asteraceae, tribe Cardueae) with about 60 species is distributed throughout West and Central Asia, Europe, North Africa, and the Canary Islands (SUSANNA & GARCIA-JACAS 2007). Its systematic position has been determined as basal within the subtribe Carduinae (WAGENITZ & HELLWIG 1996; GARCIA-JACAS et al. 2002; SUSANNA & GARCIA-JACAS 2007). Life form, shape and indumentum of capitula, size and structure of pappus, and also size and status of phyllaries are the most used diagnostic characters for species distinction in the genus *Onopordum*.

Whilst carrying out a taxonomic revision of the genus *Onopordum*, it was realized that in the protologues for *O. heteracanthum* var. *carmanicum* BORNM. and *O. myriacanthum* BOISS. no holotype is cited. Following a thorough examination of the literature and of the type material, lectotypes are designated here for these taxa. Both are accepted as distinct species.

Typifications

Onopordum heteracanthum var. *carmanicum* BORNM., Bull. Herb. Bossier, ser. 2, 7: 222 (1907).

≡ ***Onopordum carmanicum* (BORNM.) BORNM.**, Beih. Bot. Centralbl. 59B: 302 (1939). Type: Iran. Prov. Kerman: Kerman, in collibus, 2100 m, 03.07.1892, J.F.N. Bornmüller 5144 [lectotype (designated here, Fig. 1): JE 00007314 scan!, isolectotypes: B_10_0279219 scan!, B_10_0279220 scan!, B_10_0279221 scan!, G 00301096 scan!, K 000778307 scan!, WU 0071919 scan!].

Further syntype: Iran. Prov. Kerman: Kerman, in collibus, 2100 m, 03.07.1892, J.F.N. Bornmüller 5143 [B_10_0279222 scan!].

BORNMÜLLER (1907) collected several specimens of this taxon at the type locality and labelled them with two different numbers (5143 and 5144). Based on Art. 40.2 (MCNEILL et al. 2012) they must be considered as syntypes and a lectotype should be selected. The sheet “JE 00007314” is here selected as the lectotype because its specimen is in better

* Kazem Negaresh, Department of Horticulture, Faculty of Agriculture, Ramin Agriculture and Natural Resources University of Khuzestan, Mollasani, Ahvaz, Iran. – kazem.negaresh@gmail.com

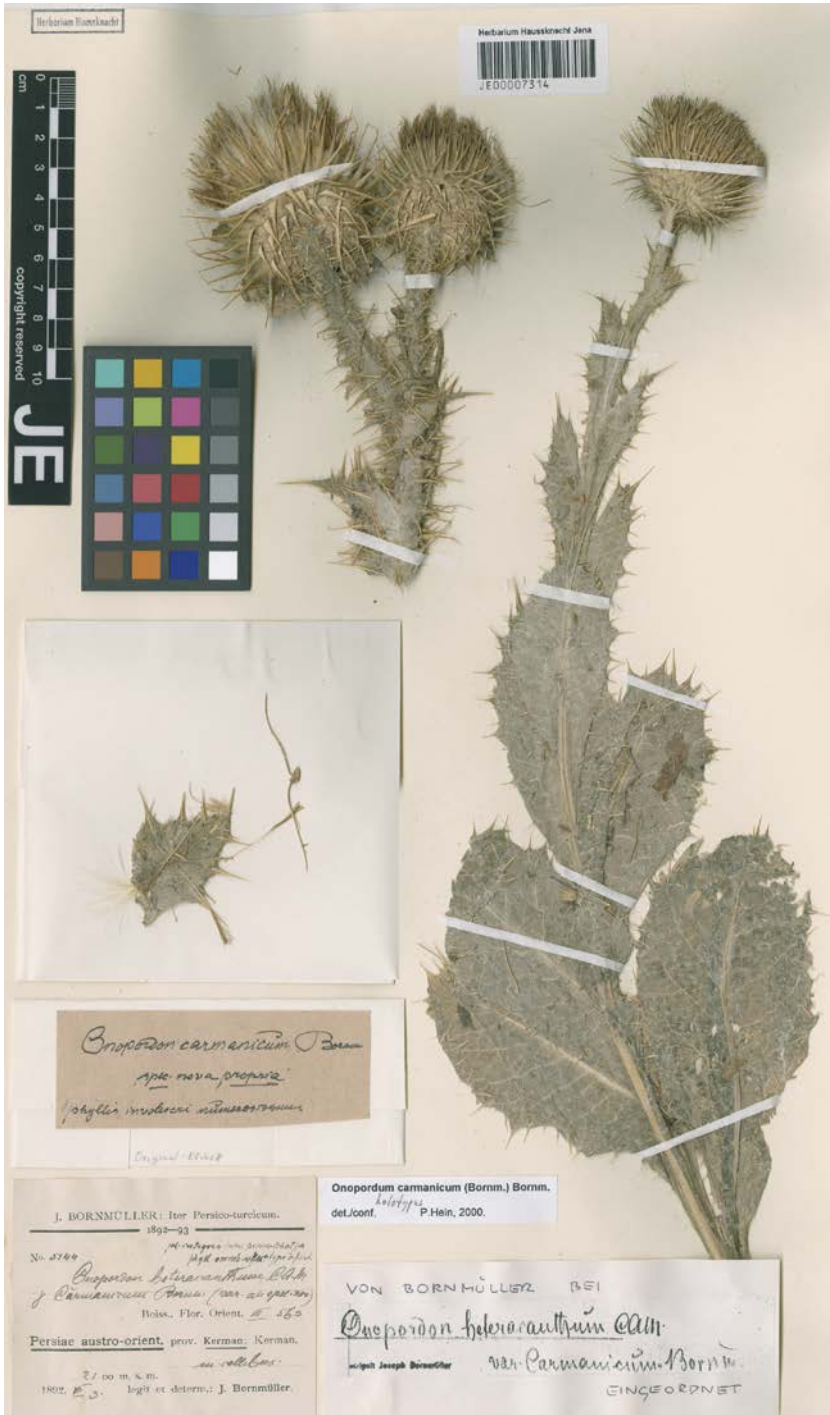


Fig. 1. *Onopordium heteracanthum* var. *carmanicum* BORNM., Lectotype B. – © Herbarium Haussknecht, Friedrich-Schiller-Universität Jena.



Fig. 2. *Onopordum myriacanthum* Boiss., Lectotype G. – © Catalogue des herbiers de Genève (CHG), Conservatoire & Jardin botaniques de la Ville de Genève, <http://www.ville-ge.ch/musinfo/bd/cjb/chg>.

condition than the remaining specimens and shows all relevant characters mentioned in the protologue.

***Onopordum myriacanthum* BOISS.**, Diagn. Pl. Orient. Ser. 2, 6: 114 (1859).

≡ *Onopordum bracteatum* subsp. *myriacanthum* (BOISS.) FRANCO, Bot. J. Linn. Soc. 71(1): 46 (1975).

≡ *Onopordum illyricum* subsp. *myriacanthum* (BOISS.) NYMAN, Consp. Fl. Eur.: 403 (1879).

Type: Greece. In regione media montis Malevo Laconiae, 13.07.1850, T.G. Orphanides 55 [lectotype (designated here, Fig. 2): G 00301169 scan!, isolectotypes: BM 000578058 scan!, BR 0000009821484 scan!, K 000778301 scan!, K 000778302 scan!, L 0700301 scan!, S 06-18564 scan!, W 0040699 scan!, WAG 0003945 scan!].

Further syntypes: Greece. In regione media Parnassi inter Rachova et Gourna, 10.08.1858, T.H.H. von Heldreich 3203 [G not seen, K 000778303 scan!].

In the protologue for *O. myriacanthum* (BOISSIER 1859), two syntype collections (Orphanides 55 and Heldreich 3203) were cited, now deposited in different herbaria. The sheet “G 00301169” is selected here as the lectotype because its specimen contains indumentum, phyllaries and capitula that are better developed than in the remaining specimens and shows the characters mentioned in the protologue.

Acknowledgments

The author is greatly thankful of the personnel of the herbaria: B, BM, BR, G, JE, K, L, S, W, WAG and WU, for their valuable contributions during the revision of the materials and for providing the images of the types.

References

- BOISSIER E., 1859: Diagnoses plantarum orientalium novarum, ser. 2, vol. 3, part 6. – Lipsia [Leipzig]: Herrmann, Paris: Baillière.
- BORNMÜLLER J.F.N. 1907: Beiträge zur Flora der Elbursgebirge Nord-Persiens. – Bull. Herb. Bossier, ser. 2, 7: 209–224.
- BORNMÜLLER J.F.N. 1939: Aus der Pflanzenwelt von Iranisch-Balutschistan und der angrenzenden Wüste Lut. (Gabriel: Iter irano-gedrosiacum a. 1937). – Beih. Bot. Centralbl. 59B: 287–316.
- FRANCO J. DO A. 1975: Flora Europaea: Notulae Systematicae ad Floram Europaeam spectantes, No. 17. – Bot. J. Linn. Soc. 71 (1): 45–47.
- GARCIA-JACAS N., GARNATJE T., SUSANNA A. & VILATERSANA R., 2002: Tribal and subtribal delimitation and phylogeny of the Cardueae (Asteraceae): a combined nuclear and chloroplast DNA analysis. – Mol. Phylogenet. Evol. 22 (1): 51–64.
- MCNEILL J. et al., 2012: International Code of Nomenclature for algae, fungi, and plants (Melbourne Code). – Regnum Vegetabile 154.
- Nyman C.F. 1879: Conspectus florae Europaeae. – Örebro Sueciae: Typis officinae Bohlinianae.
- SUSANNA A. & GARCIA-JACAS N., 2007: Tribe Cardueae. – In: KADEREIT J.W. & JEFFREY C. (eds.): The families and genera of vascular plants, 8: 123–146. – Berlin, Heidelberg & New York: Springer.
- WAGENITZ G. & HELLWIG F.H., 1996: Evolution of characters and phylogeny of the Centaureinae. – In: HIND D.J.N. & BEENTJE H.J. (eds.): Compositae: Systematics. Proceedings of the International Compositae Conference, Kew, 1994: 491–510. – Kew: Royal Botanic Gardens.