

A new species of *Hybridolinus* SCHILLHAMMER, 1998 from China (Insecta: Coleoptera: Staphylinidae)

H. Schillhammer*

Abstract

Hybridolinus flavocinctus sp.n. from China (Sichuan) is described. The aedeagus is illustrated and the key to the species of *Hybridolinus* SCHILLHAMMER, 1998 is modified to accommodate the new species.

Key words: Insecta, Coleoptera, Staphylinidae, Staphylininae, Philonthina, *Hybridolinus*, new species, determination key.

Zusammenfassung

Hybridolinus flavocinctus sp.n. aus China (Sichuan) wird beschrieben. Das männliche Genital wird abgebildet und der Bestimmungsschlüssel zu den Arten der Gattung *Hybridolinus* SCHILLHAMMER, 1998 wird abgeändert um die neue Art zu berücksichtigen.

Introduction

Shortly after the description of the genus *Hybridolinus* was published (SCHILLHAMMER 1998) I received three specimens of a new species from China (Sichuan) which is described in the following. Consequently, it was necessary to modify the key to the species to accommodate the new species. The types are deposited in the collections of A. Smetana, Ottawa (CSO) and Naturhistorisches Museum Wien (NMW).

Hybridolinus flavocinctus sp.n.

Holotype ♂: "CHINA: SE Sichuan Jinpo Shan, 29°01'N 107°14'E, 1750 m, 27.IV.1998, A. Smetana [C71] \ 1998 China Expedition J. Farkac, D. Král, J. Schneider & A. Smetana" (CSO).

Paratypes (2 exs.): ♀: same data as holotype (CSO); ♂: same data as holotype but "[C72]" (NMW).

DESCRIPTION: 11.4 - 11.8 mm long (5.3 - 5.6 mm, abdomen excluded). - Black, shining, elytra with shoulders, epipleura and posterior margins markedly pale yellowish (more distinctly than in the other, similar species), antennae black, four outer segments creamy white, palpi black, each last segment fuscous with pale tips, tibiae yellowish, distal fifth blackened, abdomen black, moderately to strongly iridescent, apical third of segment VII and basal half of segment VIII reddish-yellow.

Head trapezoidal, distinctly wider than long, ratio 1.7 in large male (holotype), 1.5 in small male and 1.35 in female; eyes large, 1.15 - 1.2 times as long as tempora; pronotum about

* Dr. Harald Schillhammer, Naturhistorisches Museum, Zweite Zoologische Abteilung, Burgring 7, A - 1014 Wien, Austria. - Email: heinrich.schoenmann@nhm-wien.ac.at.

as long as wide, sides moderately but distinctly sinuately emarginate posteriorly in front of base, emargination occupying half of length of pronotum.

The species is very similar to *H. daliensis* SCHILLHAMMER, 1998 and *H. similis* SCHILLHAMMER, 1998 in the punctuation of the body and in the build of the antennae. It differs by the smaller size, more slender shape, smaller elytra and by the coloration.

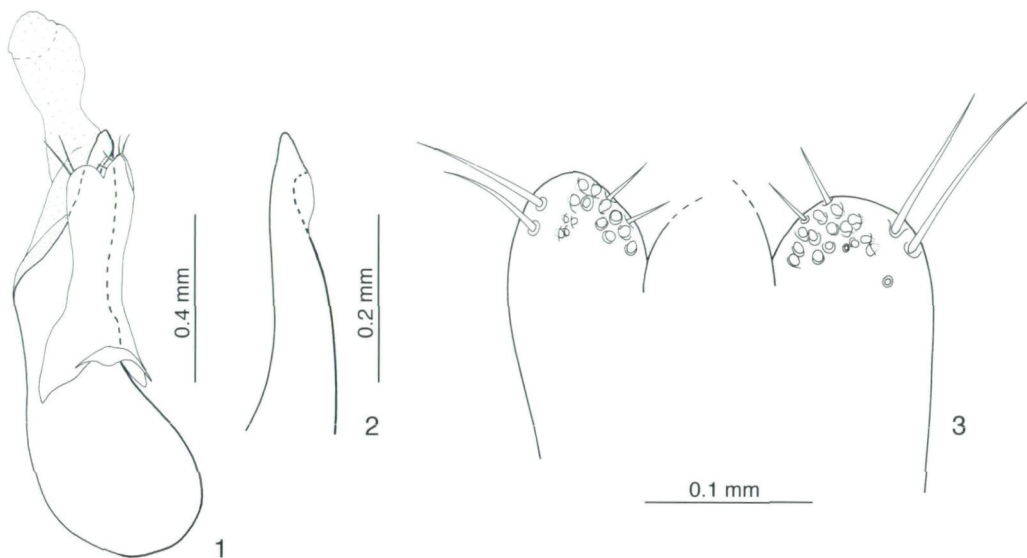
Male: In the larger male the elytra are distinctly carinate laterally, the smaller male is lacking this character. Aedeagus (Figs. 1 - 3): median lobe with more distinctly pointed apex than in *H. daliensis* and *H. similis*, paramere with less deep, V-shaped, acutangular, medio-apical excision.

DISTRIBUTION: The species is at present known only from the type locality. According to the restricted distribution ranges of the other species of the genus and due to the rather isolated position of this limestone mountain, *H. flavocinctus* might be endemic to Jinfo Shan.

ETYMOLOGY: The specific epithet is composed of *flavus* (Latin: yellow) and *cinctus* (Latin: surrounded, enclosed) and refers to the yellow margins of the elytra.

Revised key to species of *Hybridolinus*

- | | | |
|---|--|------------------------|
| 1 | Antennae with 2 outer segments creamy-white; head and pronotum very shining due to very faint microsculpture | 2 |
| - | Antennae with 4 (rarely 3 or 5) outer segments creamy-white; head with distinct isodiametrical microsculpture | 3 |
| 2 | Visible tergites I - V with posterior margins markedly reddish; brick-red elytra with variably large, well confined black markings laterally; eyes very large, 1.75 - 2.0 times as long as tempora | <i>H. hesperoides</i> |
| - | Visible tergites I - III entirely black, posterior half of 4th and entire 5th visible tergite reddish; brick-red elytra with only a slight "shadow" postero-laterally; eyes smaller, 1.15 times as long as tempora | <i>H. singularis</i> |
| 3 | Entirely black, including legs | <i>H. diabolicus</i> |
| - | Not entirely black, elytra with shoulders, apical margin and epipleura yellowish, legs at least partly yellowish | 4 |
| 4 | Abdominal segment VIII entirely reddish, elytra violaceous or reddish | 5 |
| - | Abdominal segment VIII with posterior half black, elytra black | <i>H. flavocinctus</i> |
| 5 | Elytra violaceous | 6 |
| - | Elytra reddish | 7 |
| 6 | Abdominal segment VII entirely reddish | <i>H. daliensis</i> |
| - | Basal third of abdominal segment VII black | <i>H. similis</i> |
| 7 | Legs entirely yellow | <i>H. jizushanus</i> |
| - | Femora and apical tips of tibiae dark | <i>H. decipiens</i> |



Figs. 1 - 3: Aedeagus of *H. flavocinctus*; 1) ventral view, 2) apical portion of median lobe, lateral view, 3) apical portion of paramere.

Reference

SCHILLHAMMER H., 1998: *Hybridolinus* gen.n. (Insecta: Coleoptera: Staphylinidae), a problematic new genus from China and Taiwan, with description of seven new species. – *Annalen des Naturhistorischen Museums Wien*, 100 B: 145-156.