

Berosus uhligi sp.n. from Namibia (Insecta: Coleoptera: Hydrophilidae)¹

S. Schödl*

Abstract

Berosus uhligi sp.n. from Namibia is described as new to science. The species belongs to the *Berosus nigriceps*-group and is closely related to *B. guilielmi* KNISCH, 1924, with which it is compared. New records for *B. guilielmi* are given.

Key words: Coleoptera, Hydrophilidae, *Berosus*, Namibia, new species, Ethiopian Region.

Zusammenfassung

Berosus uhligi sp.n. aus Namibia wird neu für die Wissenschaft beschrieben. Die Art gehört der *Berosus nigriceps*-Gruppe an und wird mit dem nächstverwandten *B. guilielmi* KNISCH, 1924, verglichen.

Introduction

Berosus (s.str.) *uhligi* sp.n. is a member of the *B. nigriceps*-group. Together with *B. guilielmi* KNISCH, 1924, which hitherto has been placed separately (see SCHÖDL 1994), it forms a species-complex within that species-group.

Acknowledgements and Abbreviations

CMP (The Carnegie Museum of Natural History, Pittsburgh), HUB (Museum der Alexander Humboldt Universität zu Berlin), MHNP (Muséum National d'Histoire Naturelle, Paris), NMW (Naturhistorisches Museum, Wien), SMN (State Museum of Namibia, Windhoek).

My sincere thanks are due to Dr. M. Uhlig (HUB), who supported the author with interesting material. I am also indebted to Dr. R. Angus (London) and Dr. M.A. Jäch (NMW) for reading the manuscript. Dr. Y. Cambefort (MHNP) and Dr. R. L. Davidson (CMP) supported the author with additional material of *B. guilielmi*.

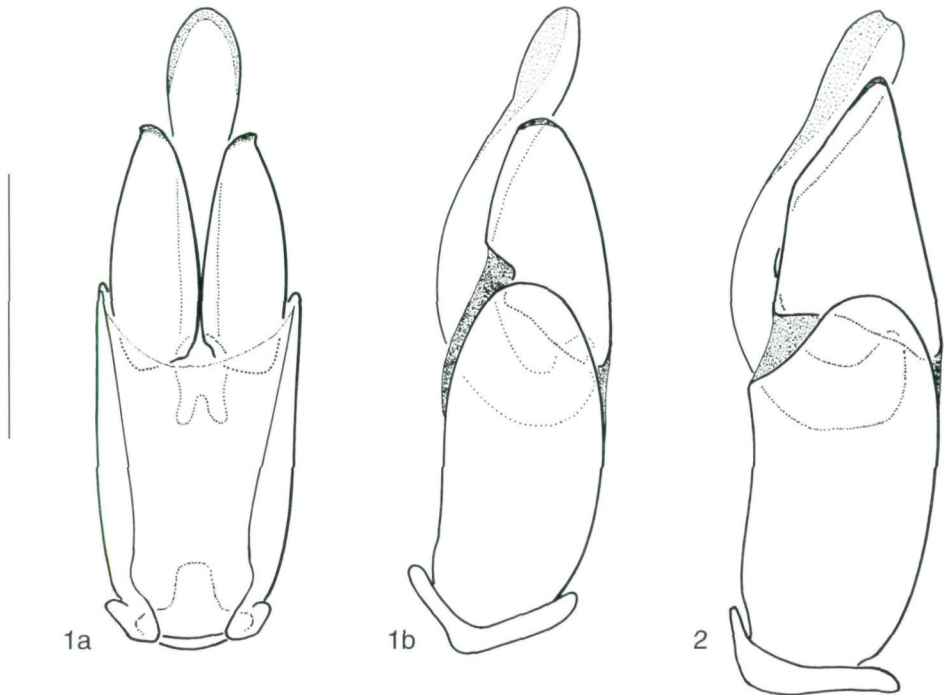
Key to *Berosus guilielmi* and *B. uhligi* sp.n.

The new species can be inserted into the key to the species of the *B. nigriceps*-group (modified and translated from SCHÖDL 1994) as follows:

- | | | |
|---|---|---|
| 1 | Pronotum without distinct marks | 2 |
| - | Pronotum with more or less distinctly defined marks | 5 |
| 2 | Metafemur of ♂♂ never with an acute spine on hind margin; head always dark, with metallic sheen | 3 |

¹ Results of the entomological expeditions of the Museum of Natural History Berlin to Africa. 33rd contribution.

* Dr. Stefan Schödl, Naturhistorisches Museum in Wien, 2. Zoologische Abteilung, Burggring 7, A-1014 Vienna, Austria.



Figs. 1 - 2: (1) Aedeagus: (a) dorsal view, (b) lateral view of *Berosus uhligi* sp.n., (2) Aedeagus (lateral view) of *Berosus guilielmi* KNISCH.

- Metafemur of ♂♂ with an acute spine on hind margin 2a
- 2a Head black; pilosity reaching $\frac{2}{3}$ of hind femur length, spine on posterior margin shorter, situated in proximal half of femur length (Fig. 5); aedeagus (Fig. 1a, b). 6.3 x 2.5 mm. Namibia (Fig. 6). *B. uhligi* sp.n.
- Head brownish; pilosity reaching $\frac{3}{4}$ of hind femur length; spine on posterior margin long, situated in middle of femur length (Fig. 4); aedeagus (Fig. 2). 4.2 - 6.2 mm. Mauretania, Mali, Niger, Nigeria, Chad, Sudan, Tanzania, Kenya (Fig. 6) *B. guilielmi*

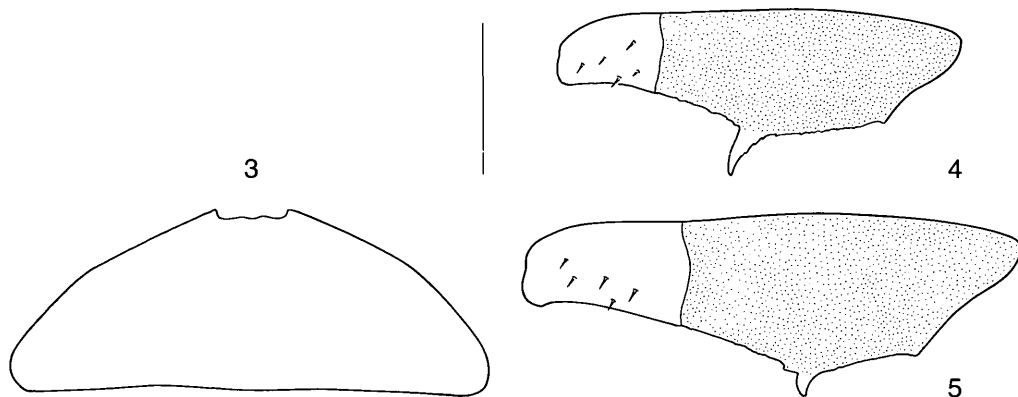
Berosus (s.str.) *uhligi* sp.n.

Type locality: Ruacana Dorp, Ovamboland, Namibia.

Type material: Holotype ♂ (by present designation): "NAMIBIA: Ovamboland Ruacana Dorp 17°26'S/14°21'E 23.II.1994 leg. M. Uhlig" (SMN).

Description: 6.3 x 2.5 mm; body outline broadly oval; in colour similar to *B. nigriceps* FABRICIUS, 1801.

Head: black, with metallic sheen, yellow triangular spots on clypeus in front of eyes; frons and clypeus regularly and strongly punctate; clypeus laterally with striae, frons with scattered fine striae, laterally rugosely punctate; antennae yellow, club not obscured; mandibles black, their apex red; maxillary palpi stout, ultimate segment apically darkened; underside of head piceous; mentum shining, with few basal punctures.



Figs. 3 - 5: (3) Fifth sternite of *B. uhligi* sp.n.; Pilosity and position of spine on posterior margin of hind femur of (4) *B. guilielmi* and (5) *B. uhligi* sp.n.

Pronotum: yellow and glabrous, without any obscuration, with very fine scattered punctures and additional few coarser, setiferous, lateral punctures; margined except base, chagreened throughout.

Elytra: same colour as pronotum, densely and evenly covered with setiferous obscured punctures; elytral striae, except well defined sutural stria, inconspicuously impressed, visible by the pigmentation of punctures only; pigmentation of lateral striae obsolete; each elytron darkened near base and provided with a dark lateral patch in middle of its length and one behind middle in 2nd plus 3rd stria.

Underside: dark brown, provided with regularly dispersed, hydrofuge pubescence; mesosternum with a low median carina; metasternum keeled antero-medially, followed by a narrow glabrous, elevated area on metasternal process; sides of the latter continuously converging posteriorly; first visible sternite finely keeled medially; hind margin of 5th visible sternite with shallow emargination (Fig. 3), its lateral sides microscopically serrate, similar to that of *B. guilielmi*.

Legs: yellowish, base of all femora densely pubescent; pilosity reaching $\frac{2}{3}$ of hind and middle femur length; middle and hind femur dilated medially; middle femur with a short, blunt denticle on posterior margin; hind femur with a short acute spine on posterior margin, situated in proximal half of femur length (Fig. 5).

Aedeagus (Figs. 1a, b): similar to that of *B. guilielmi*; apex of median lobe in frontal view less dilated and less flattened than in *B. guilielmi*, reaching further beyond the parameres than in that species; parameres in lateral view less triangular; apices lamellar, blunt.

Differential diagnosis: *Berosus uhligi* sp.n. can be separated from *B. guilielmi* by the black head, the different extension of the pilosity of the femora, the different position and shape of the femoral spine and by the slightly different aedeagus. From other species of the *B. nigriceps*-group (SCHÖDL 1994) it can be separated by the the male bearing a median acute spine on the hind margin of the metafemora.

Distribution (Fig. 6): so far known only from the type locality.

Etymology: named after Dr. Manfred Uhlig, the collector.

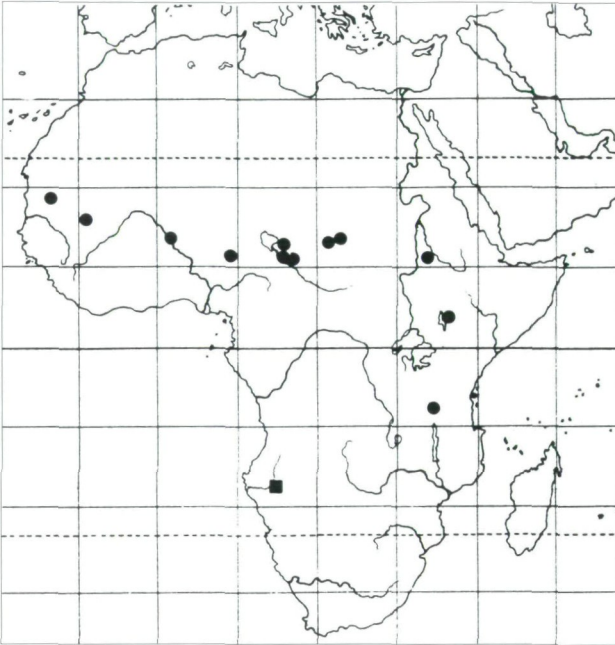


Fig. 6: Distribution of *B. guilielmi* (dots) and *B. uhligi* sp.n. (square).

Berosus (s.str.) *guilielmi* KNISCH

Berosus (s.str.) *guilielmi* KNISCH, 1924: 23. - d'ORCHYMONT 1934, LEGROS 1950, SCHÖDL 1994.

Additional material examined: Chad (new records): Bas Chari, Ft. Lamy [= N'Djamena], 1904, leg. Decors (MHNP, NMW); Baguirmi, Tchekna, 1904, leg. Chevalier (MHNP); Massakori, 60 km E Lake Chad, 1904, leg. Chevalier (MHNP). Niger (new record): Niamey, 4.VIII.1985, leg. McNary (CMP).

Distribution (Fig. 6; see also SCHÖDL 1994): Mauretania, Mali, Niger (new record), Nigeria, Chad (new record), Sudan, Tanzania, Kenya.

References

- KNISCH, A. 1924: Neue afrikanische Palpicornier. (Col. Hydrophilidae. - Op. 14.). - Wiener Entomologische Zeitung 41 (1-3): 19-29.
- LEGROS, C. 1950: Contribution a l'etude de l'Aïr (Mission L. Chopard et A. Villiers). - Mémoires de l'Institut Française d'Afrique Noire 10: 215-218.
- d'ORCHYMONT, A. 1934: Mission J. De Lépiney au Soudan Français 1933-34 (Cinquième note) Palpicornes. - Bulletin de la Société des Sciences Naturelles du Maroc 14 (1-3): 28-29.
- SCHÖDL, S. 1994: Revision der Gattung *Berosus* LEACH 5. Teil: Die äthiopischen und madagassischen Arten der Untergattung *Berosus* LEACH, s.str. A: Die *Berosus nigriceps* Gruppe (Insecta: Coleoptera: Hydrophilidae). - Annalen des Naturhistorischen Museums Wien 96 B: 209-246.